



# Let's get you **connected**

Welcome to Yomojo 5G Internet

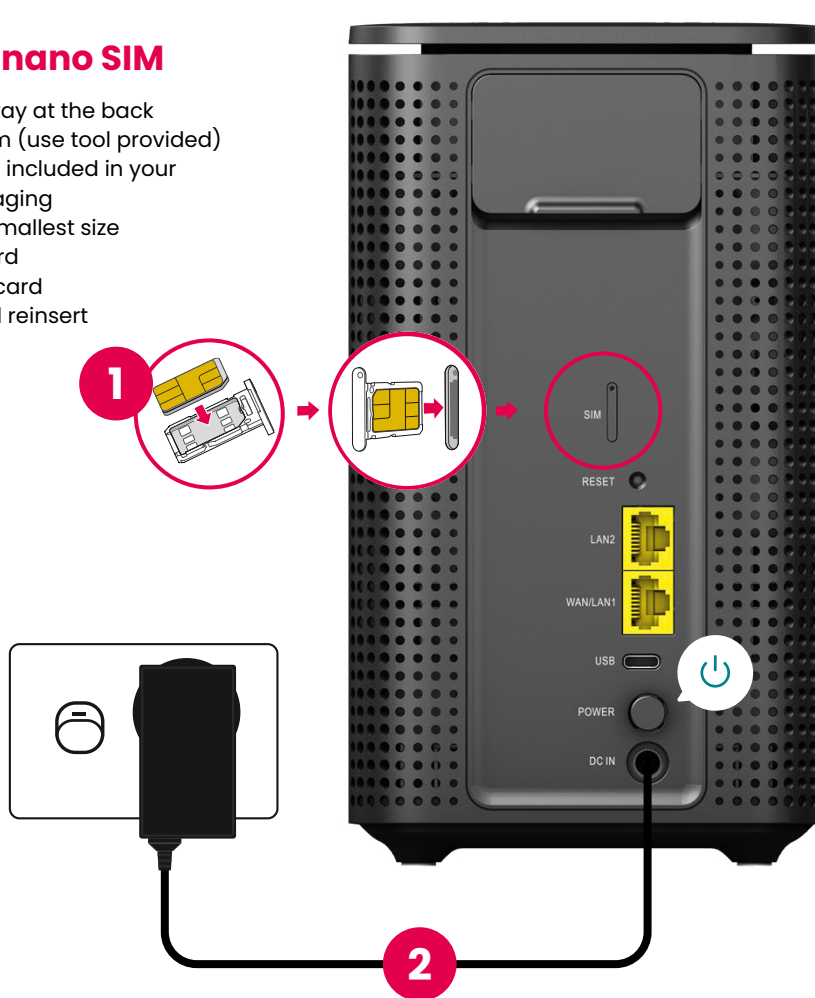
Ultra WiFi 5G Modem Quick Start Guide

**Yomojo**<sup>®</sup>

# Let's get you set up in 4 simple steps

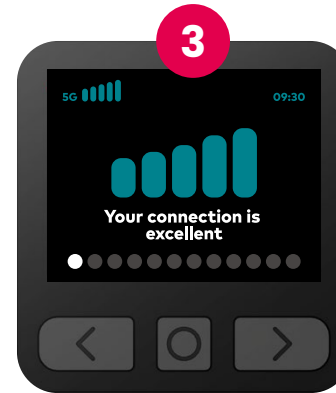
## 1. Insert the nano SIM

- Eject the SIM tray at the back of your modem (use tool provided)
- Locate the SIM included in your modem packaging
- Push out the smallest size (nano) SIM card
- Place the SIM card in the tray and reinsert




## 2. Power the modem

- Plug in the modem's power cable into the powerpoint
- Press the modem power button on
- Wait 30 seconds for the modem to complete powering up




## 3. Check the modem screen

- Navigate through the modem screen using the buttons under the screen:  

- Use the screen to view your 5G connection strength, WiFi login details, screen brightness and more



## 4. Connect devices to WiFi

Connect your device using either the QR code or the WiFi Name and Password. Found here:

- The modem screen (Press  button)
- WiFi fridge magnet
- Modem base sticker

# Handy tips

Something not working as expected? Try these common fixes.

## Slow internet?

If you are connected to the modem's WiFi network, the issue may be that the modem is not getting a clear 5G signal. View your 5G signal strength on the modem screen and use the following tips to maximise your connection:

- Check you placed your modem near a window facing the nearest Optus 5G tower
- Check your modem isn't blocked by any large or metal objects
- Making small repositioning movements and rotating the modem slightly can help improve your signal strength

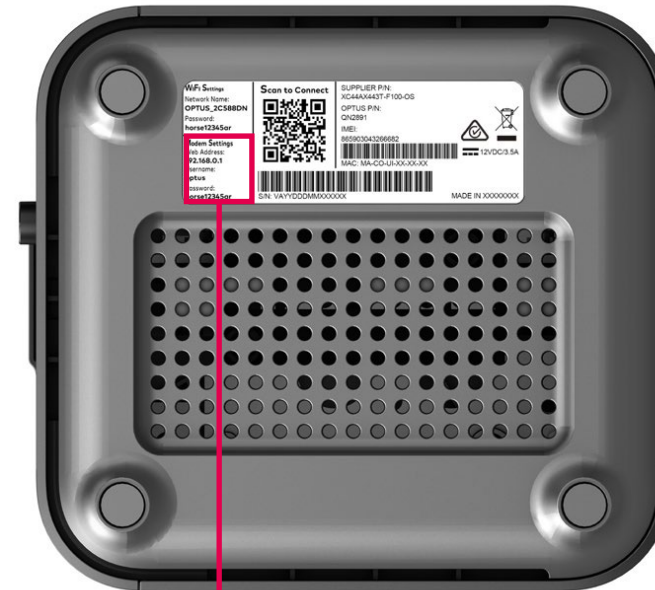
## Slow WiFi?

If you need to cover a large home or office, you may need a WiFi Booster to reach more rooms.



# Manage your modem

To change your WiFi name, password and other settings you can view and manage your modem at <http://192.168.0.1>  
Login details are found on the modem base



## Modem Settings

Web Address  
**192.168.0.1**

Password  
**your-password**

# Need assistance?

Contact our 5G Internet expert team at  
**1300 966 656**

**\*Monday to Friday** 8:00 am to 8:00 pm

**\*Saturday to Sunday** 10:00 am to 6:00 pm

---

**\*All times AET**

**Yomojo**<sup>®</sup>

[www.yomojo.com.au](http://www.yomojo.com.au)